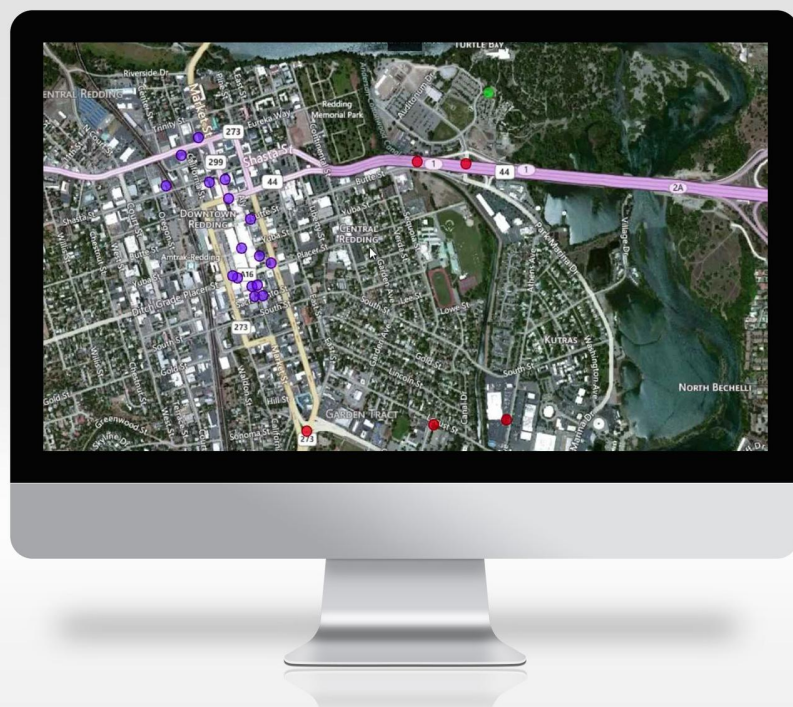




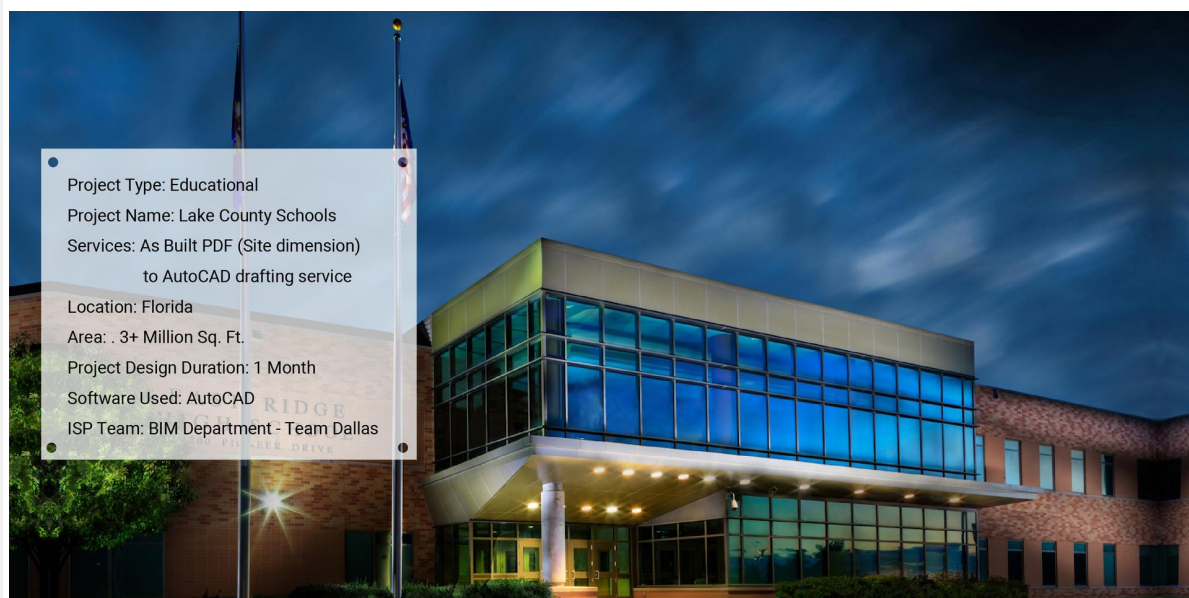
New Service On The Block:

## Survey Mapping



ISP is proud to announce a new offering - Survey Mapping Services. We are adding Survey Mapping to our list of services with the aim of offering survey data with higher accuracy and cost reduction. Our team of experienced engineers and survey experts ensures the highest quality delivery in the preferred formats. ISP will provide survey mapping with CAD survey mapping, old as-built, drone photometry and the latest technology laser scan to 3D model.

## Offered BIM services for 20+ Schools



This month, our team has provided high-quality BIM service for more than 25 schools for a client. Each served school was more than 1,25,000 sq. ft in area. Our engineers delivered 20 hours of continuous support daily to match the client's expectations. The team received on-site dimensions and then converted them into AutoCAD drawings from the site dimension. Our engineers and architects worked in two shifts to meet the deadlines. The client was really happy with the work done by our team. Combined with our proven processes and integrated project management structure, our experts delivered an outstanding performance that catered to the client's unique needs.

[Read More](#)



### ISP celebrated Women's Day with a Blast

ISP's love for its girl team is immense and so was the Women's Day celebration at ISP. We celebrated an entire week (March 8- 14) as Women's Week which was filled with amazing activities and events for our female squad. The week consisted of workday dress codes, appreciation certificates and gift distributions, fitness sessions, picnic and a dinner party. It was a fun week celebrating the female warriors of ISP.



### ISP promoting 'Strong Mindset' among the leaders

Last month ISP arranged an undergoing training program on 'Strong Mindset'. The workshop was taken by a well-known mindset coach - Mr. Kalpesh Raichura (Co-founder - Connect Quotient) and was focused on Building quality mindsets, creating customer advocacy & driving excellence. This training helped the TLs in overcoming business obstacles, evolving communication, adaptability, open mindfulness and long-term thinking in a true sense.



[www.ispusa.net](http://www.ispusa.net)