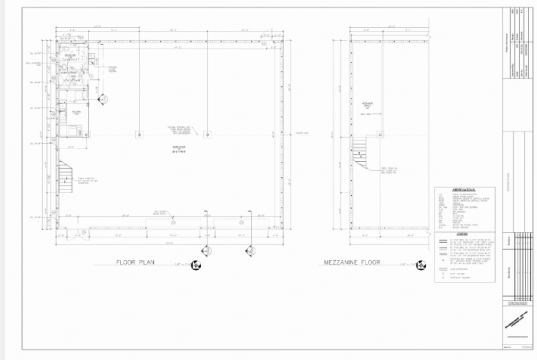


# APPLE PIE & CHAI

## Project of the Month

**Project Type:** Commercial Warehouse  
**Location:** Florida  
**Software Used:** Autodesk AutoCAD and Microsoft Office



Our latest commercial warehouse project in Florida proves the power of comprehensive design assessment in achieving a contemporary design. With a team of skilled architects and engineers, we meticulously planned and innovatively designed a commercial warehouse that is aesthetically pleasing, structurally sound, and highly functional. We accomplished this feat within 2.5 weeks using Autodesk AutoCAD and Microsoft Excel.

Since the client wanted structural and architectural design and drafting support, we presented the initial layout and received approval for the architectural plans. To complete the foundation design, we conducted initial wind load calculations followed by truss connection, lintel, and steel column designing. The client was integral to the project's progress and was pleased with the outcome.

As with any commercial project, we faced our share of challenges while addressing the structural details in the plan. However, our team's expertise and dedication allowed us to resolve these minor setbacks efficiently and complete the project within the specified timeline. This project is yet another demonstration of our skill and commitment to providing superior design support without compromising.

[View Brochure](#)

## Brought to You by ISP



**Real Stories, Real Impact**  
Meet Travis Kerr, our delighted client, as he recounts his experience with ISP's Architectural design services! He shares how ISP's dedicated and super-responsive team offered him customized solutions for his project.

[Watch Now](#)

### Importance of Spatially Coordinated Designs for Seamless Integration of MEP Engineering Services

While architects hit home runs...

[Read More](#)



## Social Graph



## Industry Insights

Trimble recently launched updated versions of Tekla's Structural BIM software for 2024. The focus is to improve collaboration, usability, and connected workflows to benefit construction projects and stakeholders. The updated versions include Tekla Structures 2024, Tekla PowerFab 2024, Tekla Structural Designer 2024, and Tekla Tedds 2024, all emphasizing information security compliance.



[Read More](#)

## A Peek into ISP Moments



At ISP, we believe in nurturing and caring. Whether it's the environment or our employees, we know that small gestures can make a big difference. We celebrated World Environment Day and Fun Friday, keeping our ethos of community building in mind. On World Environment Day, we arranged a quiz for everyone. Our Fun Friday involved celebrating the birthdays of our June crew, followed by some fun activities and a snack party to help our teammates relax.

## Structural Splendor in India

Rani Ki Vav, the Queen's Stepwell, is a colossal historic water storage structure located in Patan, Gujarat. It showcases the artistic expression, functional ingenuity, and engineering brilliance of ancient Indian [engineers and architects](#). Carved into the earth in the 11th century, Rani Ki Vav is an inverted temple celebrating the sanctity of water. While the Archaeological Survey of India restored the temple in the 1980s, UNESCO designated it as a World Heritage Site in 2014, making it a source of national pride.

